



MESSAGE FROM THE COOPERATIVE

Powering through summer storms

Ohio weather, especially in the summer, can bring powerful and unpredictable storms capable of heavy rainfall, lightning, intense wind, and even hail. As we've experienced in years past, and even as recently as this spring, severe weather can leave our members facing power outages and property damage. We understand the frustration and hardship such storms cause and remain committed to restoring your power as safely and efficiently as possible.

At Holmes-Wayne Electric, storm readiness starts long before the storm clouds begin to form. Our crews regularly inspect and maintain power lines, replace aging equipment, and manage vegetation along rights-of-way to reduce the risk of trees contacting lines. We also review emergency response plans, stage materials, and coordinate with neighboring cooperatives so we can respond quickly when outages occur. When major storms hit, we're also able to call on mutual aid crews, as we did after the windstorm that struck our area this past March. It's just another example of cooperatives working together to restore power as efficiently as possible.

While we prepare on the system side, I would encourage you to also practice safety and preparedness to protect your family during storms and outages.

Start by having a plan. Summer storms can develop quickly, and outages can last longer when damage is widespread. If your household relies on medical equipment that requires electricity, having a backup plan in place is especially important. That may include battery backups, a generator, or

arrangements to stay with family or friends.

If you use a generator, ensure it is properly grounded and placed in a well-ventilated area to prevent carbon monoxide poisoning. Never connect a generator directly to your home's wiring without a transfer switch installed by a qualified electrician.

Staying connected is another key part of preparation. Make sure to follow our Facebook page, where we provide important restoration updates. I also encourage you to report outages through our SmartHub app or by texting 55055. These options immediately place your information in our outage management system, allowing dispatchers to begin coordinating a safe and efficient repair process.

Simple steps like securing outdoor items, keeping flashlights and batteries accessible, and knowing how to safely respond to downed power lines can also make a difference when a storm rolls through.

And when the storm hits, know that our lineworkers are trained to handle these situations. They work long hours in challenging conditions to get your lights back on. We prioritize safety and efficiency in our restoration efforts, starting with critical infrastructure and then moving to the most widespread outages. While every outage is important, we appreciate your patience as we work to restore power.

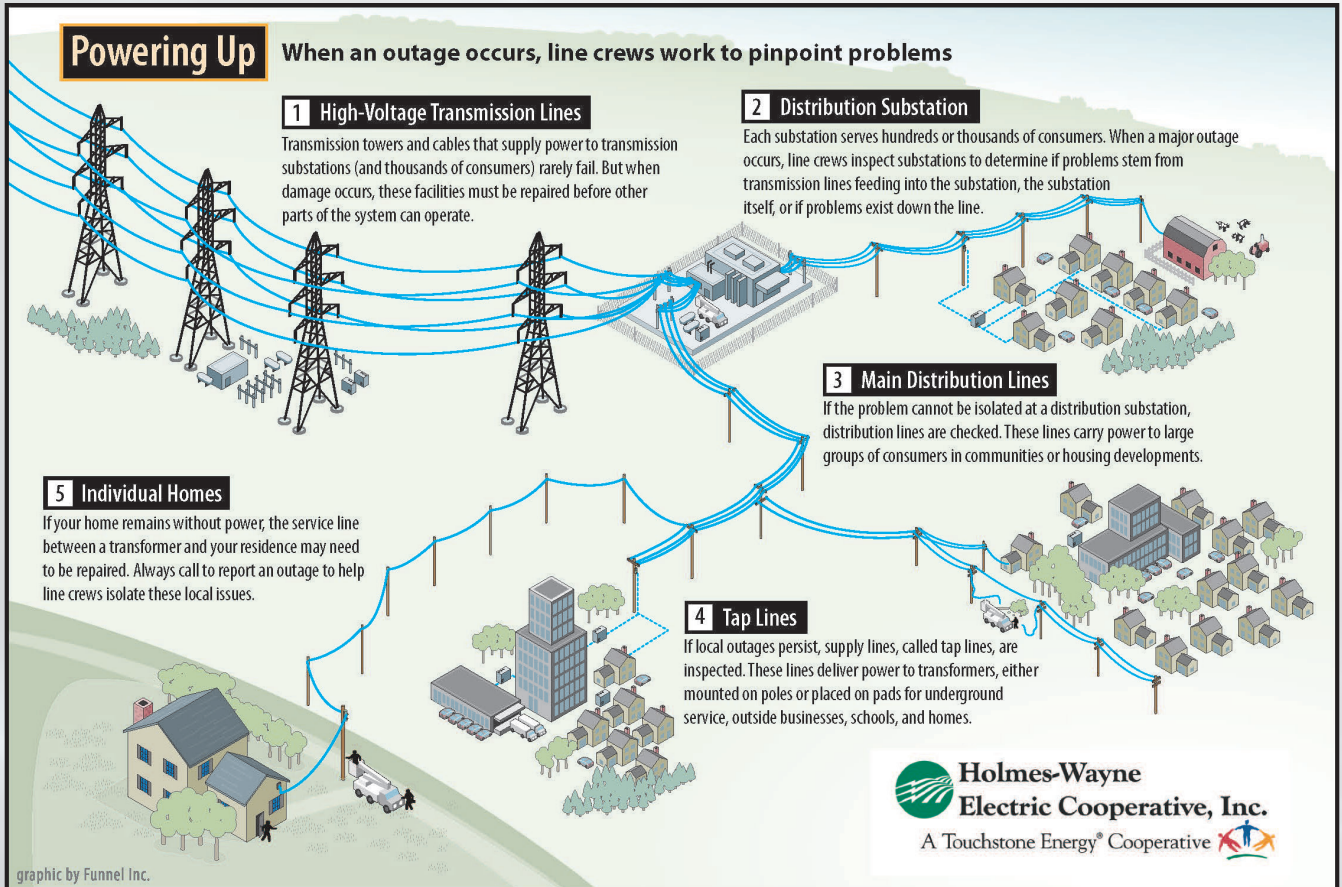
By preparing now, we can all weather summer storms more safely and comfortably. HWEC is committed to keeping the lights on and restoring power quickly when nature has other plans.



John Porter
PRESIDENT/CEO



HOLMES-WAYNE ELECTRIC COOPERATIVE LOCAL PAGES



When electricity goes out, most of us expect power will be restored within a few hours. But when a major storm causes widespread damage, longer outages may result. Co-op line crews work long, hard hours to restore service safely to the greatest number of consumers in the shortest time possible. Here's what's going on if you find yourself in the dark.

Estimating restoration time

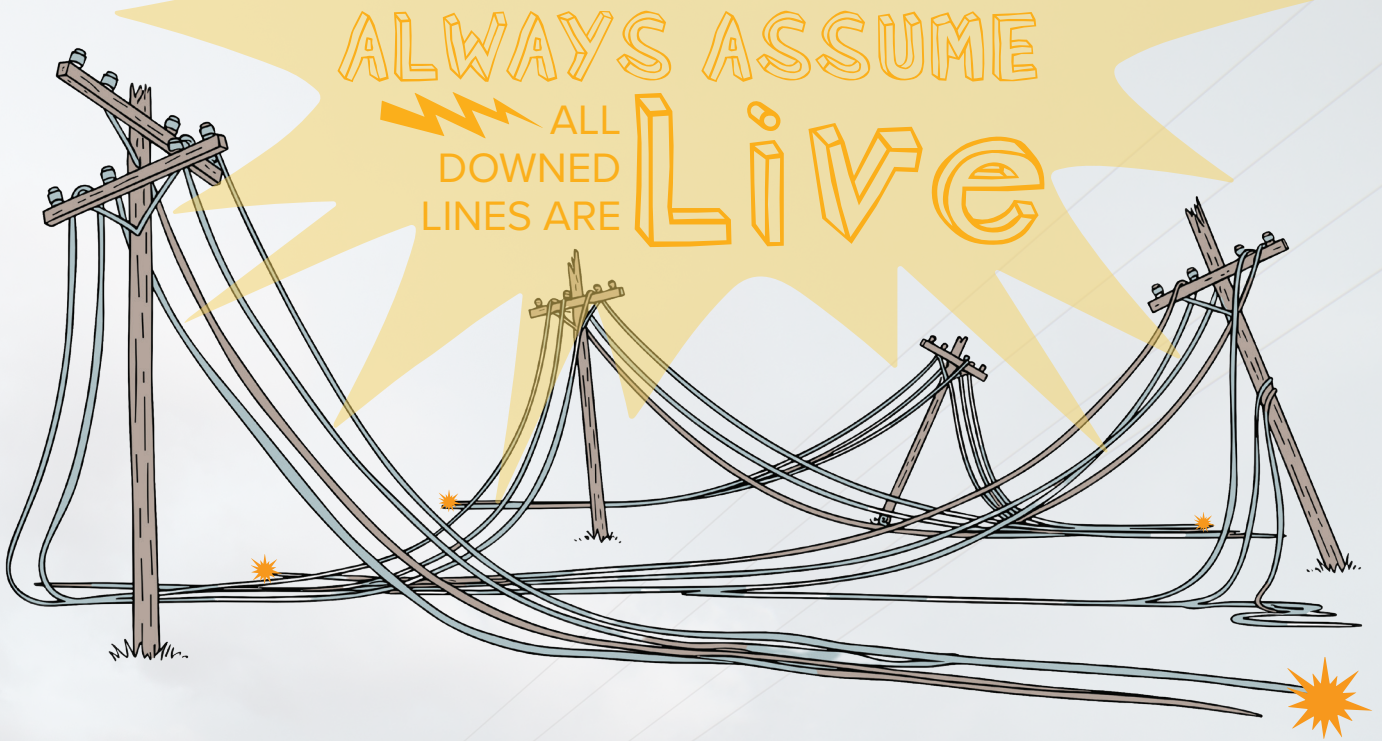
Estimating restoration times after a power outage is a complex process. Our crews often face unpredictable conditions as they work to restore service, making each new section of line its own unique challenge. There are several factors involved in our approach to providing restoration estimates:

Pole replacement

Replacing broken utility poles is a time-consuming task. The time required can vary widely, typically ranging from four to six hours. Several factors influence this duration, including accessibility, type of line, and additional equipment needed.

Restringing service lines

A single three-phase span can weigh up to 180 pounds per phase. Restringing all three phases can total approximately 540 pounds, not including the additional 110-pound neutral line. This weight and complexity demand both physical strength and technical expertise to ensure lines are safely and efficiently restrung.



Downed power lines can be deadly. Always assume a downed power line is live and avoid approaching it and anything near it.

USE CAUTION!

Downed power lines can energize the ground up to **35 feet** away and even more in wet conditions.

Never drive over downed power lines or anything in contact with them.

If you see a downed power line, **call 911**.

Never try to move a downed power line.

Tree removal

Safely removing trees requires a high level of skill, precision, and constant awareness. The removal must be done carefully to avoid further damage or safety hazards.

Providing accurate and timely information to our members is a priority. However, automated or generic responses can lead to confusion and frustration. Instead, we employ a hands-on approach, especially during major storms, beginning with a 24-hour damage assessment.

Restoration estimates provided within the first 24 hours are based solely on what our crews have been able to identify during that initial period. At that stage, not all of our more

than 2,300 miles of line or outage locations have been inspected, so estimates may be adjusted as additional damage is uncovered or as weather conditions continue to evolve.

To help members plan effectively, we provide restoration estimates as percentage of the overall system. This approach allows members to prepare for worst-case scenarios and manage their expectations regarding service restoration.

By maintaining clear communication and providing realistic estimates, we aim to restore power efficiently and ensure our members are well informed throughout the process.

Scan the QR code for tips on being prepared for storms.





Member spotlight: Paint Valley Equipment

In the rolling countryside of Holmes County, where hard work and strong values shape daily life, Paint Valley Equipment has grown from a small, family-run operation into a trusted supplier serving customers across North America. Despite that growth, the company has remained grounded in the same principles it was founded on more than 40 years ago: solving problems, delivering quality, and building lasting relationships.

The story of Paint Valley Equipment begins in 1984, when founder Levi Miller set out with a simple goal. Using a homemade track press, he started repairing equipment for neighbors, focusing on practical, dependable solutions. That hands-on approach quickly revealed a larger need. Replacement parts for heavy equipment were often expensive or difficult to source, creating challenges for those who relied on that equipment every day.

In response, the Miller family began producing their own parts. What started to fill a local gap steadily evolved into a business centered on manufacturing and distributing undercarriage components for heavy equipment, including parts used on excavators, bulldozers, and other machinery essential to construction and earth moving. Over time, that commitment to solving real-world problems helped the company expand beyond its local roots.

Today, Paint Valley Equipment serves a dealer network across the United States, Canada, and Mexico. These partnerships are at the core of the company's operations. Dealers rely on consistent quality, timely delivery, and responsive service, and Paint Valley has built its reputation on meeting those expectations day after day.

At its core, Paint Valley Equipment is focused on producing reliable, high-quality parts. By managing the process from raw materials through final inspection, the company ensures consistency while maintaining the flexibility to respond to customer needs. Their products

are built for real-world performance, supporting the equipment that keeps construction projects moving and infrastructure development on track.

That commitment extends beyond the product itself. In an industry that is increasingly automated, Paint Valley has chosen to prioritize direct, personal service. Every customer interaction is handled by a live team member, allowing for faster problem-solving and a better understanding of each customer's situation. This approach has helped build long-standing relationships and trust across the markets they serve.

PV Equipment's responsiveness to its customers is reflected in the company's performance metrics. Manufactured parts maintain a warranty rate of just 0.55%, an excellent, highly efficient performance metric

for manufacturing firms. Paint Valley Equipment also provides a 92% same-day shipment record. With more than 5,000 active part numbers in stock, the company can respond quickly to customer needs across a wide range of equipment and applications.

The company also continues to invest in the

future. As older machines are retired and new models enter the field, Paint Valley is committed to engineering and product development that keep pace with industry changes. Ensuring that dealers have access to the right parts, at the right time, remains a central focus.

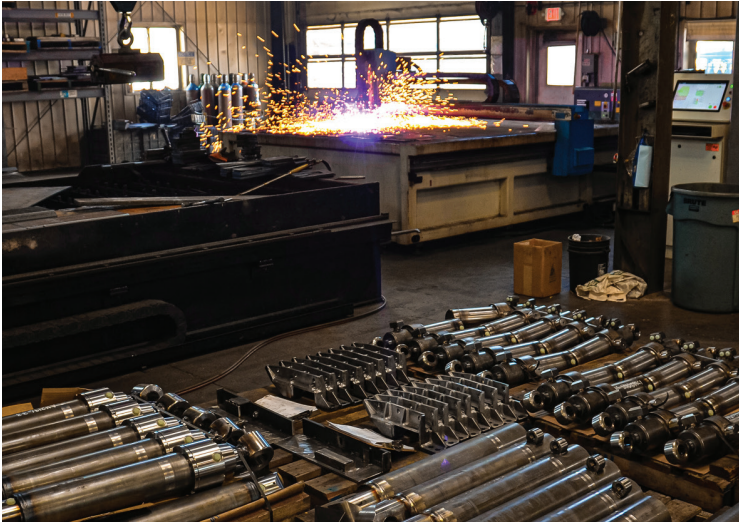
That same forward-looking mindset led to the creation of Acu-Form, a division dedicated to roll forming equipment for the building supply industry. Acu-Form equipment is designed for durability and long-term performance. These machines are built to meet the specific needs of customers, providing flexibility across a wide range of profiles and applications. Established more than 15 years ago, Acu-Form has grown into a key part of the company's operations by helping keep operations running efficiently with minimal downtime.

Continued on page 18D





HOLMES-WAYNE ELECTRIC COOPERATIVE LOCAL PAGES



Continued from page 18C

Now a third-generation family-owned business, Paint Valley Equipment reflects decades of steady growth and long-term thinking. Each generation has built on the work that came before, while continuing to adapt to the changing needs of industry. Working together as a family brings both challenges and strengths, but it has also created a culture rooted in shared responsibility and a clear sense of purpose.

Despite its international reach, the company remains closely tied to Holmes County. The values found in this community continue to shape how the business operates, from the way employees work together to how customers are treated. Leadership and team members remain actively involved in the area, supporting local organizations such as FFA chapters and maintaining a strong connection to the community that helped shape the company's identity.

Although much of Paint Valley Equipment's work happens behind the scenes, its impact is seen in everyday life. The parts the company manufactures and distributes help power the equipment used to build roads, develop land, and maintain essential infrastructure. In this way, Paint Valley plays an important role in supporting communities both locally and across the country.

Today, more than 300 Acu-Form machines are operating across North America, each engineered and built in-house at Paint Valley. This milestone reflects the company's longstanding commitment to quality, reliability, and customer service. In an industry where dependable equipment is essential, Paint Valley Equipment has built its reputation on delivering exactly that.



Shaffer completes COLT program

Congratulations to Holmes-Wayne lineman Nathan Shaffer, who recently completed the Central Ohio Lineworker Training program. This rigorous, four-year apprenticeship program includes 8,000 hours of on-the-job training interspersed with 600 hours of instruction.

2026 Cardinal Plant tour

This is your opportunity to tour the power plant that generates your electricity and learn more about recent energy policies!



Thursday,
September 17, 2026



Board bus at 7:00
a.m. at Holmes-
Wayne. Return at
approximately
4:00 p.m.



Brilliant, Ohio

If you are an HWEC member who is interested in participating in this educational tour, please contact Shay at 866-674-1055.

Participants must be at least 12 years old.

Please note:

Tour includes a considerable amount of walking, including stair-climbing.



POWER STUDENT WINNERS



Claire Hoover

Daughter of
Joe and Ashley Hoover
West Holmes
Middle School



Evie Miller

Daughter of
Laron and Rachel Miller
Waynedale
Middle School



Josiah Charton

Son of
Scott and Kim Charton
Norwayne
Middle School



**Holmes-Wayne
Electric Cooperative, Inc.**

A Touchstone Energy® Cooperative 

CONTACT

866-674-1055 (toll-free)
www.hwecoop.com

OFFICE

6060 St. Rte. 83
P.O. Box 112
Millersburg, OH 44654-0112

This institution is an equal opportunity provider and employer.

BOARD OF TRUSTEES

Randy Sprang
Chairman
Jackie McKee
Vice Chairman
Barry Jolliff
Secretary/Treasurer
Jonathan Berger
Lisa Grassbaugh
Gary Graham
Ronnie Schlegel
David Tegtmeier
Chris Young
Trustees
John Porter
President/CEO

SMARTHUB

Report an outage, submit a meter reading, and pay your bill all through our mobile SmartHub application. Available for both Android and Apple devices



CALL US 24/7

Report outages, submit meter readings, and make payments

Text an outage to 55050 with the word "outage."

Facebook.com/holmeswayneelectriccoop
Instagram: @hwec1935