



MESSAGE FROM THE PRESIDENT/CEO

## HWEC DEDICATION IN 2018 WILL CONTINUE IN 2019

As we close out 2018, on behalf of our nine-member board and 38 employees, I would like to express our appreciation for the opportunity to serve you as a member-owner of Holmes-Wayne Electric Cooperative.

This past year has been a busy year for HWEC as we introduced a new website, distributed over \$1,160,000 in cash back to our members through capital credits, rebuilt 19 miles of lines, replaced 403 poles, trimmed trees for 385 miles and sprayed vegetation control on 938 miles of rights-of-way, while adding 140 new services.

From the community standpoint, we visited seven school districts to provide safety demonstrations, career day education, or energy efficiency information. We brought valuable safety information to the Amish community through two local events, reaching out to four counties. We coordinated our third Veterans Honor Trip with the Shreve American Legion and Rolling Thunder Chapter 2. We again provided to our HWEC members a tour of our Cardinal Power Plant in Brilliant, Ohio.

Our line personnel not only continued their 24/7 dedication of service to our HWEC members but brought the lights back on to residents in North Carolina twice this year with the storms of Hurricane Michael and Hurricane

Florence. Even more heartwarming was bringing power for the first time to a village in Guatemala. Class A Lineman Josh Johnson spent two weeks with 16 other Ohio linemen on this humanitarian effort.

Locally, after hours, the staff gave of their personal time to be coaches, work at their churches, and volunteer at school activities, Holmes County Home, community touch-a-truck events, and local parades.

Through our Operation Round Up program, we distributed your donations of more than \$50,000 to over 50 individuals, families, and organizations in our community.

As you have read, it's been an exciting year at your cooperative. We wanted to share with our members how your cooperative is working hard and utilizing your dollar to the fullest potential. As we look ahead to a new year, we continue our commitment to innovation, customer service excellence, and dedication to our community.

Your Holmes-Wayne Electric Cooperative family would like to wish you a very merry Christmas and a blessed 2019!



Glenn W. Miller  
PRESIDENT/CEO

**The HWEC office will be closed  
Dec. 24–25 and Jan. 1.**

**As always, you can contact us for  
outages and emergencies through  
our mobile app, SmartHub, or call  
toll-free 866-674-1055.**



## Small heaters can lead to bigger bills

During winter, comfort at home means heat. While a good central heating system is designed to meet whole-house needs, sometimes consumers turn to space heaters for additional warmth. Some people use one to increase temperatures for a single room, but their widespread use over extended periods can boost winter heating bills.

Two types of space heaters are available for the residential market. Convective heating circulates air within an enclosed space, while radiant heating transfers warming energy directly to objects or people within close proximity to its source.

If central heating is unavailable or inadequate, a convective heating unit can distribute heat relatively evenly throughout an enclosed space. For garages, workshops, workout rooms, or laundry areas, a convective heater used for a few hours a day or each week could be a good fit.

Radiant electric heaters typically include infrared heating elements. Nearby surfaces, including people, absorb the heat. Air in immediate proximity to the unit's enclosure or cabinetry also aids in the transfer of conductive warmth.

### Safe not sorry

Space heaters get seasonal use, but they are responsible for 25,000 residential fires a year, according to the U.S. Consumer Product Safety Commission, which pegs the annual mortality rate at 300 a year. Burn injuries associated with surface contacts with room heaters send about 6,000 people to emergency rooms every year, and most of those incidents don't result in fires.

Devices should always be set in locations clear of all flammable materials and out of reach of small children, pets, or anyone with impaired mobility. In recent years, many space heaters have been designed with tip-over safety features, which automatically shut off the power source in the event that the unit tilts beyond its upright position. Space heaters should be plugged directly into a wall rather than using an extension cord.

Given a choice between high, medium, and low or an adjustable thermostat, choose the latter. A unit that heats your space to the desired temperature will cycle less, saving you energy, and never overheat the room.



### Getting more for less

"Space heaters are not the ideal solution for heating homes," says Kenny DePriest, HWEC energy advisor. "Using one space heater during non-sleeping hours can cost you close to \$100 a month on your electric bill."

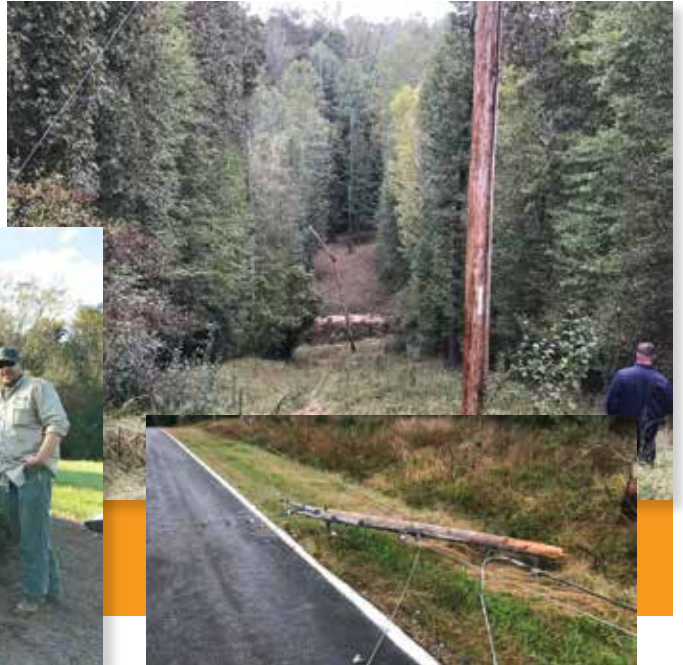
There are currently no space heaters among the EPA's list of ENERGY STAR®-rated products. Agency officials said they have evaluated several models but have no plans to include such products in the labeling program in the near future.

"Part of my position is assisting cooperative members to determine if a space heater is right for your home," DePriest explains. "I often suggest other alternatives, like sealing air leaks, adding insulation, or even tuning up your heating system so it operates more efficiently. That is the difference of receiving your electric from a cooperative. We are here to help you make the best decisions."



# Hurricane Michael power restoration

Holmes-Wayne Electric applauds the efforts of Class A linemen Bowe Firebaugh and Greg Lemon as well as apprentices Matt Morris and Zach Noble, who traveled to North Carolina to help restore power after the devastation of Hurricane Michael. Thank you for all you do, both here at home and out of state!



## Holmes-Wayne Electric holiday gift cards



The holidays are quickly approaching, and if you're having trouble finding the perfect gift for family and friends, consider the gift of assisting with their monthly utility bill.

A gift certificate to assist a Holmes-Wayne Electric Cooperative member might just be the ideal present for your parents, grandparents, children, or someone in need. It's not just for holidays or birthdays, though — you can also help someone going through a tough time.

If you're looking for a useful present for someone you know who is a member of Holmes-Wayne Electric Cooperative, contact us toll-free at 866-674-1055. Gift cards have the option of remaining anonymous.



# 2019 Scholarship

Win up to \$2,500



## FOR RULES AND APPLICATIONS:

Are you a graduating high school senior and resident of HVEC service? Apply to win one of 10 scholarships.

- Visit [hwecoop.com](http://hwecoop.com)
- Call the co-op at 866-674-1055
- Stop by the co-op office in Millersburg
- Pick them up from your guidance counselor
- Deadline to apply: Friday, Feb. 1, 2019



Congratulations to our intern, Kate Rodhe! She was selected to receive a \$1,000 scholarship from Ohio's Electric Cooperatives. The Cooperative Intern Scholarship awards students who have performed exceptional work as interns at one of the 24 Ohio electric cooperatives. We appreciate her hard work and positive spirit as she joins in our commitment to provide excellent service to all HVEC members!



Holmes-Wayne  
Electric Cooperative, Inc.

A Touchstone Energy® Cooperative 

### CONTACT

866-674-1055 (toll-free)

[www.hwecoop.com](http://www.hwecoop.com)

### OFFICE

6060 St. Rte. 83

P.O. Box 112

Millersburg, OH 44654-0112

### BOARD OF TRUSTEES

Randy Sprang  
Chairman

Dave Mann  
Vice Chairman

Barry Jolliff  
Secretary/Treasurer

Jonathan Berger  
Kenneth Conrad  
Bill Grassbaugh  
Jackie McKee

Ronnie Schlegel  
David Tegtmeier  
Trustees

Glenn W. Miller  
President/CEO

### SMARTHUB

Report an outage, submit a meter reading, and pay your bill all through our mobile SmartHub application.

Available for both Android and Apple devices



### CALL US 24/7

Report outages, submit meter readings, and make payments

[Facebook.com/holmeswayneelectriccoop](https://www.facebook.com/holmeswayneelectriccoop)