



MESSAGE FROM THE PRESIDENT/CEO

# Safe, reliable, affordable

**Y**ou expect reliable and affordable electricity from your electric cooperative, so how does Holmes-Wayne Electric Cooperative deliver on that promise?

A complex network of electricity generators and tens of thousands of miles of electrical lines work together to ensure that enough electricity is available on the coldest winter mornings and during the dog days of summer.

The key to meeting your energy needs every second of the day is balancing electricity supply with demand. While that may sound simple, there is a complex web of facilities and organizations that work together to make it happen each day.

At Holmes-Wayne Electric, we distribute electricity from our 18 substations over 2,300 miles of line to 17,690 meters in our community. The majority of the electricity is generated through our generation facility, Buckeye Power, of which we are an owner/member, along with 24 other Ohio electric cooperatives.

Buckeye Power is a member of PJM, a region transmission organization that coordinates, controls, and monitors the electric grid across several states in a region. Think of them as energy traffic managers on an interstate highway system, regulating the number of cars — in this case, electricity — and their destination.

Cooperative members in Ohio are fortunate to be in the PJM region from Ohio to New Jersey. This regional system has proven to be very reliable and well managed. Other regions have experienced power interruptions or blackouts. Through PJM, Buckeye Power sells excess generation and purchases additional electricity when high demand arises.

As more electric utilities pursue zero or low carbon initiatives by 2035 and beyond, this challenge will grow more complex.

Large-scale power suppliers such as coal and nuclear plants are being closed and replaced by alternative generators on a much smaller scale. Unfortunately, the historical gap of surplus generation over demand is closing more quickly despite the development of new natural gas-fueled power plants and outfitting coal plants with clean energy emissions. Simply explained, power plants that generate electricity are being closed faster than new or improved producers come online.

So what's the answer?

Buckeye Power has invested \$1.1 billion in their Cardinal Power Plant to provide one of the cleanest coal-generating plants in the world. Also, Buckeye Power has and will continue to develop renewable options and pursue new technologies. But absent new large-scale alternatives and advancements in energy storage, the stalwarts of today's energy fleet — coal and nuclear energy facilities — must continue to operate. They remain the most cost-effective and reliable options for producing electricity.

As we move into a new year, we take on these challenges and look optimistically to commonsense resolutions to provide safe, reliable, and affordable power to our members. Fuel diversity will be paramount to the resiliency of the nation's electric grid.



Glenn W. Miller  
PRESIDENT/CEO



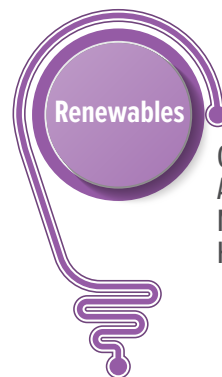
Baseload  
assets

Cardinal Power Plant  
Clifty Creek and  
Kyger Creek plants



Peaking  
facilities

Robert P. Mone Plant  
Greenville  
Generating Station



Renewables

OurSolar  
Anaerobic digesters  
Methane generation  
Hydropower



# 2022 GRADS

**Are your parents  
Holmes-Wayne Electric members?**

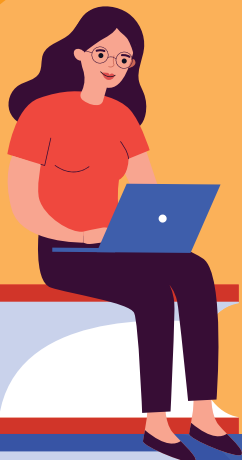
If so, you  
could win

**\$6,900**  
in scholarships!

To obtain rules and applications  
for the **Children of Members  
Scholarship:**

- Visit [hwecoop.com](http://hwecoop.com)
- Call the co-op at 866-674-1055
- Ask your guidance counselor

***Deadline to apply: Jan. 20, 2022***



Holmes-Wayne  
Electric Cooperative, Inc.

A Touchstone Energy® Cooperative 

# Thank you for powering the lives of our community!



*Shay Lynch*

Administration Coordinator  
5 years



*Brian Spencer*

Manager Information  
Technology and Engineering  
15 years



*Michael Maurer*

Class A Lineman  
20 years



*Lisa Suttle*

Member Services Representative  
5 years



*John Porter*

VP of Engineering & Operations  
30 years



*Lisa Sutton*

Billing Supervisor  
30 years



*Albert Schonauer*

Operation Field Technician  
40 years



*David Mann*

Board Trustee  
20 years

At HVEC, our responsibility goes beyond a normal Monday through Friday work week. Our dedicated staff is on call 24/7. Many evenings and weekends throughout the year are not spent at home but rather, restoring power and giving back to the community. We understand our commitment, and we love serving this great community.

We extend a special recognition to the following employees and board member who celebrated milestones in their careers with the cooperative. Thank you for your dedication and passion for serving our HVEC members!



# Winter storm safety

Snow and ice storms can lead to downed power lines and outages. Remember the following tips to stay safe and warm should you find yourself in the dark after severe winter weather.

Never touch a fallen power line and always assume all wires are electrically charged. Report your outages immediately Holmes-Wayne Electric Cooperative.

- Text “outage” to 55050
- Mobile app – SmartHub
- Call us toll-free 866-674-1055

When you use our text feature or mobile app, your outage is immediately placed in our outage management system for dispatchers and line crews.

\* Avoid contact with overhead lines during cleanup and other activities.

\* Take special care not to overload a generator. Use appropriately sized extension cords to carry the electric load. Make sure the cords have a grounded, three-pronged plug and are in good condition.

\* In the event of an outage, an alternate heating source — such as a fireplace, propane space heater, or wood stove — may

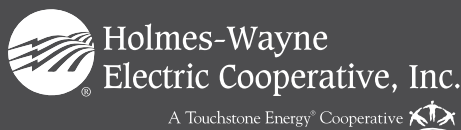
be used, but treat any of those with caution, and make sure spaces are properly ventilated to avoid deadly carbon monoxide buildup.

\* Make sure carbon monoxide detectors and smoke detectors are working properly. Test each once a month by pressing the TEST button.

\* Do not use a gas-powered oven for heating because it might go out or burn inefficiently, leading to carbon monoxide poisoning.

\* Do not use a gas or charcoal grill inside the home and do not use charcoal briquettes in the fireplace.

\* If you use a portable generator to power a heating source, be sure the generator is located outside your house in an open area that’s sheltered from moisture. Never use a generator in an attached garage.



## CONTACT

866-674-1055 (toll-free)

www.hwecoop.com

## OFFICE

6060 St. Rte. 83

P.O. Box 112

Millersburg, OH 44654-0112

This institution is an equal opportunity provider and employer.

## BOARD OF TRUSTEES

Randy Sprang  
Chairman

Dave Mann  
Vice Chairman

Barry Jolliff  
Secretary/Treasurer

Jonathan Berger  
Bill Grassbaugh  
Jackie McKee  
Ronnie Schlegel  
David Tegtmeier  
Chris Young  
Trustees

Glenn W. Miller  
President/CEO

## SMARTHUB

Report an outage, submit a meter reading, and pay your bill all through our mobile SmartHub application.

Available for both Android and Apple devices



## CALL US 24/7

Report outages, submit meter readings, and make payments

Text an outage to 55050 with the word “outage.”

Facebook.com/holmeswayneelectriccoop