



## MESSAGE FROM THE PRESIDENT/CEO

# RIGHT-OF-WAY MAINTENANCE EQUALS RELIABILITY



Glenn W. Miller  
PRESIDENT/CEO

**S**pring brings out the beauty of nature coming back to life. We see the grass turning green, the flowers blooming and trees budding and growing. However, that beauty can cause major issues for our electric infrastructure. Tree contact is the number one reason for outages for Holmes-Wayne Electric Cooperative.

One of Holmes-Wayne Electric's most essential yearly projects is right-of-way clearing, or vegetation management. Keeping power lines clear of tree limbs and brush helps the co-op to reduce power interruptions and restore outages more quickly, improve service reliability, and avoid unexpected and costly repairs. Additionally, our crews and the community benefit from a safer environment. This also helps line crews to have the space needed to work efficiently for daily general maintenance tasks.

### What is a right-of-way?

A right-of-way is the strip of land underneath or around power lines and transformers that Holmes-Wayne Electric Cooperative has the right and responsibility to maintain and clear. A general rule of thumb for maintaining a safe right-of-way is 15 feet of clearance on either side of primary lines. The area above poles and wires should be kept completely clear of all vegetation.

### Why is it important?

Trees and small animals cause a substantial number of power outages every year. While the co-op has little control over the animals, our crews can take steps to reduce the impact of downed trees. Branches and limbs that come into contact with power lines can cause voltage fluctuations, blinking lights, or even an outage for cooperative members.

Right-of-way clearing also keeps your family safe by ensuring that tree branches and vegetation don't become energized due to contact with a power line or electrical equipment.

### Emerald ash borer

You're probably familiar with the emerald ash borer, the invasive, destructive insect that has wreaked havoc across much of North America. You may have even experienced the effects of the insect yourself, if you had an ash tree on your property you had to remove. Now imagine that times HWEC's 2,287 miles of line and you can understand what a lot of hard work and expense this insect has caused your cooperative. We have been fighting the effects of the insect for the past decade and continue to do so. The emerald ash borer kills an ash tree within three to five years, and ash trees are one of Ohio's most common tree species. Dead trees are not only safety hazards but also a main cause of electrical service interruptions.

### How the co-op gets the job done

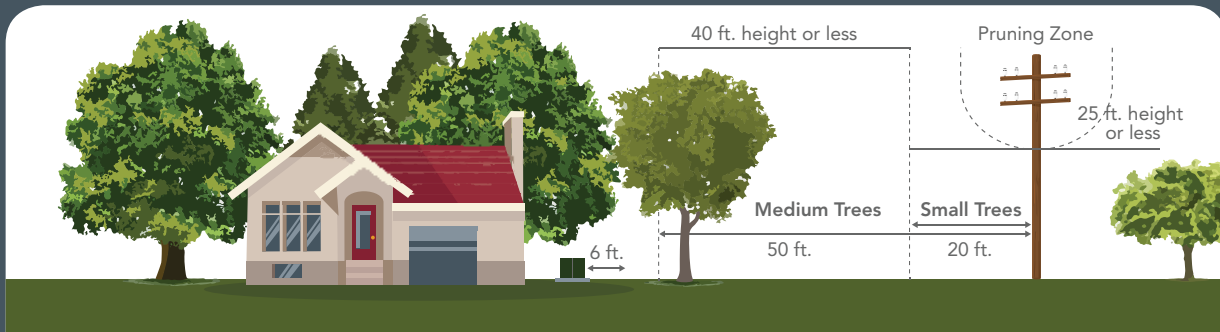
Each year, tree contractors work in specific substation service territories to keep ahead of any potential issues. This plan is on a 4-year rotation.

If a tree invades the right-of-way, the cooperative's vegetation management team will trim back branches and brush using any combination of chainsaws, bucket trucks, tree climbers, brush chippers, or mowers.

If you have existing trees on your property that are in danger of making contact with power lines, please notify us. For more information on the cooperative's vegetation management program, visit our website at [www.hwecoop.com](http://www.hwecoop.com) or contact HWEC's right-of-way supervisor, Brent Schrock, at 866-674-1055.



# HOLMES-WAYNE ELECTRIC COOPERATIVE LOCAL PAGES



## RIGHT TREE, RIGHT PLACE.



### TREE TYPES

The taller a tree will become, the further it needs to be from overhead lines.

#### SMALL | <20 FT

If planting within 15 feet of power lines



Flowering Crabapple



Flowering Dogwood



Sweetbay Magnolia



Serviceberry



Redbud



Wafer-Ash



Common Hawthorn

#### MEDIUM | 25-50 FT

Plant minimum 20 feet from overhead lines



Flowering Crabapple



Flowering Dogwood



Sweetbay Magnolia



Serviceberry



Redbud



Wafer-Ash



American Arborvitae



Junipers



Japanese Yew



False Cypress



Common Hawthorn Evergreens

#### LARGE | 40+ FT

Plant 50+ feet away from overhead lines



Norway Maple



Linden or Basswood



London Plane



Ginkgo



Sweetgum



Oak



Sugar Maple Evergreens



White Pine



Austrian Pine



White Firs



Blue Spruce

### TREES NOT SUITABLE NEAR POWER LINES

Catalpa • Carolina Poplar • Silver Maple • Boxelder • Willow • Siberian Elm • Black Locust • Cottonwood  
Tree of Heaven • Mulberry • Elm species

**CONSIDER THE FOLLOWING WHEN SELECTING A TREE**

**HEIGHT.** Will it come within 10 feet of power lines when it's fully grown?

**CANOPY SPREAD.** How wide will the tree grow?

**GROWTH RATE.** A slow-growing species is typically stronger and lives longer than fast-growing species.

**SHAPE.** A columnar tree grows in less space. Round or V-shaped trees provide more shade.



# POWER STUDENTS PROGRAM

Education helps shape the leaders of tomorrow. That's why Holmes-Wayne Electric Cooperative wants to recognize students in grades 6–8 for their hard work and dedication to education. In 2020, we are introducing the Power Students Program.

## Here's how it works!

Students in grades 6–8, whose parents or guardians are members of Holmes-Wayne Electric Co-op, are eligible to apply.

Students must have a minimum of three A's on their most recent report card (less than six months old).

A copy of the report card must be submitted by mail to: Holmes-Wayne Electric Co-op, Attn: Robyn Tate, P.O. Box 112, Millersburg, OH 44654.

Entry grade card must include student's name, parent/guardian name(s), school, grade, address (not published), and contact phone number (not published).

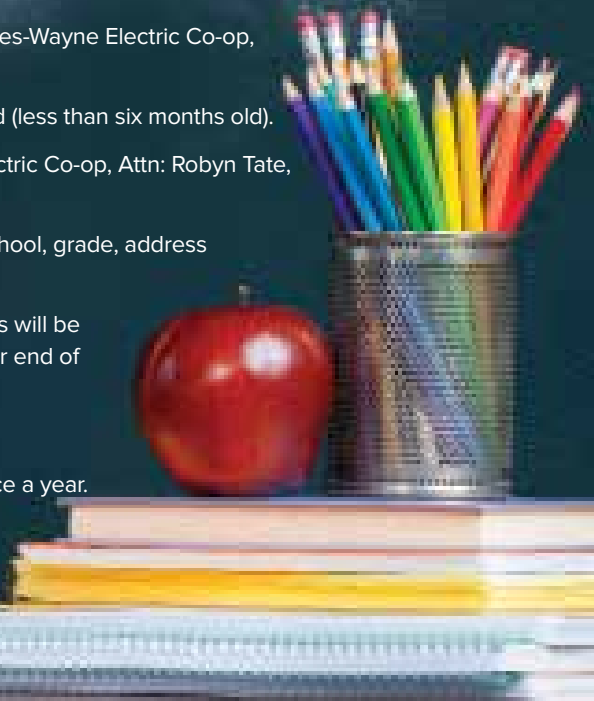
Entries will be placed into a drawing for each grading period. Drawing dates will be Feb. 10, April 10, July 10, and Dec. 10 to allow approximately one month after end of the grading period for entry submission.

Three winners will be drawn every grading period.

An entry is good for two drawings, and a student cannot win more than once a year.

Winners will receive a \$25.00 gift card. Their photo will be published in *Ohio Cooperative Living* and on the HWEC website and Facebook page. The photo can be taken by HWEC staff or submitted along with a photo release form signed by a parent/guardian.

Please contact us at 866-674-1055 with any questions.



**Congratulations** to Mason Maurer, the son of Michael and Susan Maurer, who won a \$1,200 Louise Freeland Scholarship from Ohio's Electric Cooperatives. Mason is a senior at Waynedale High School and will be majoring in nursing at Mount Vernon Nazarene University. His father is a class A lineman at Holmes-Wayne Electric Cooperative.





## HOLMES-WAYNE ELECTRIC COOPERATIVE LOCAL PAGES

# SmartHub – Smart Life

No one wants to experience a power outage, but the storms of spring and summer can often bring high winds and lightning that cause outages. As always, we strive to provide the best service possible to our members, which includes restoring power as quickly and safely as possible and providing timely information about the outage.

Remember that if you do experience a power outage, you can report it via our mobile app and online through SmartHub. You also can call us toll free at 866-674-1055. If you plan to call in your outages, be aware that the outage system matches the phone number on your account to the

phone number you call from. To keep your outage report from being delayed, it's crucial to always have an up-to-date phone number listed on your electric account.

SmartHub provides an outage map on both mobile devices and our website. Members can view any outage that occurred over the past three days. Outage information is updated every five minutes.



## Keep us informed and safe

They're adorable and a big part of our families, but even the family dog who plays well with the children can become naturally protective of and aggressive about its home. During outage restoration and maintenance of our system, HWEC line staff may be on or beside your personal property to restore or maintain your power. You can help by notifying HWEC if you have a dog that is not tied up and may sometimes be aggressive with visitors. This allows our staff to be aware of any dangers as they try to work efficiently and safely to provide your reliable electric service. Please call HWEC toll-free at 866-674-1055 to register your dog.



**Holmes-Wayne  
Electric Cooperative, Inc.**

A Touchstone Energy® Cooperative 

### CONTACT

866-674-1055 (toll-free)

[www.hwecoop.com](http://www.hwecoop.com)

### OFFICE

6060 St. Rte. 83

P.O. Box 112

Millersburg, OH 44654-0112

### BOARD OF TRUSTEES

Randy Sprang  
Chairman

Dave Mann  
Vice Chairman

Barry Jolliff  
Secretary/Treasurer

Jonathan Berger  
Kenneth Conrad  
Bill Grassbaugh  
Jackie McKee

Ronnie Schlegel  
David Tegtmeier  
Trustees

Glenn W. Miller  
President/CEO

### SMARTHUB

Report an outage, submit a meter reading, and pay your bill all through our mobile SmartHub application.

Available for both Android and Apple devices



### CALL US 24/7

Report outages, submit meter readings, and make payments

[Facebook.com/holmeswayneelectriccoop](https://www.facebook.com/holmeswayneelectriccoop)